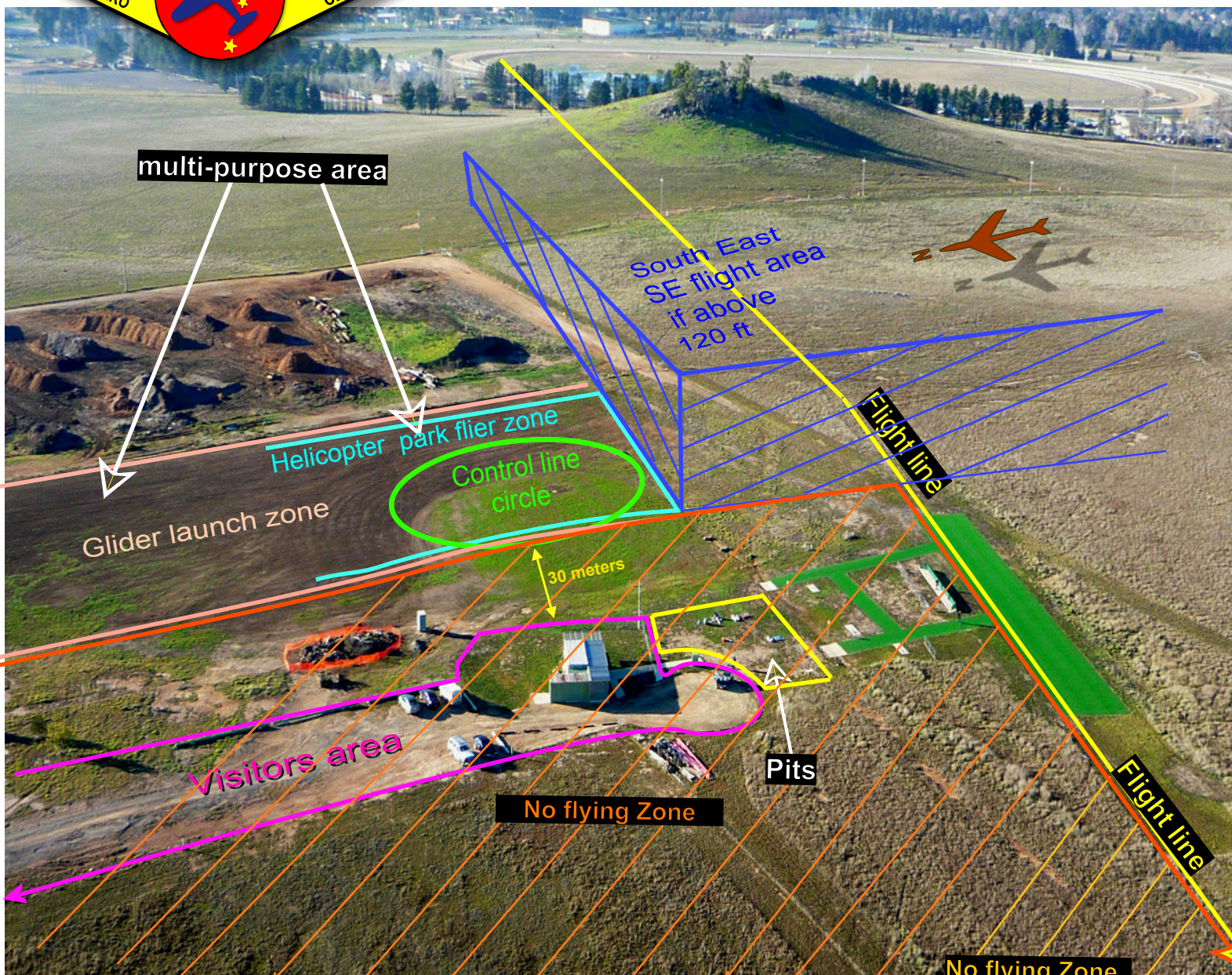




Belconnen Model Aero Club (BMAC) procedures summary



Noise Test

All aircraft must have a BMAC noise testing certificate. All aircraft must test less than 94dBa at 3 metres 30 cm above ground level. There is testing equipment and certificates in the club house. Please ask a committee member for help.

400ft limit all aircraft must remain below 400ft above ground level measured at the flight box. Unless 1000ft clearance is current.

1000 ft limit The BMAC can get temporary 1000 ft clearance by calling Canberra control tower. Instructions on how to do this is in the club house. Don't fly over 400 ft unless your a sure you have clearance. NB. 400ft = 122m and 1000ft = 305m

Flight line

Any approved aircraft can fly south of this line if controlled from the adjacent flight box. A maximum of six aircraft may be airborne at any one time. See flight line procedure and hand launching procedure before flying.

Multi Purpose Area

Common sense and consideration are the key to using this area. This is a shared area no group or individual has priority. The following aircraft can use this area: Helicopters, Electric Park Fliers and 3D electric under 1kg. Bungee launched gliders an electric gliders no faster than 60km/h. If you wish to fly high speed circuits use the flight line. If you have a particular interest group who wishes to fly at a particular time on a particular day application can be made to committee and a time may be gazetted to your group. Only one class of aircraft may be flown here at a time. Eg only helicopters or only Park fliers &etc.

Helicopters, park fliers and 3D Can fly within this zone also the area bounded by the "south east flight area" is permitted if well above 120ft (about twice the apparent height of Crace hill). Park Fliers and 3D planes must be electric and weight less than 1kg. If you wish to fly high speed circuits use the flight line.

Control line

must fly within this zone from the centre of this zone. All MAAA rules apply. Particular attention needs to be paid to noise testing and pull tests especially older aircraft.

Glider launch zone

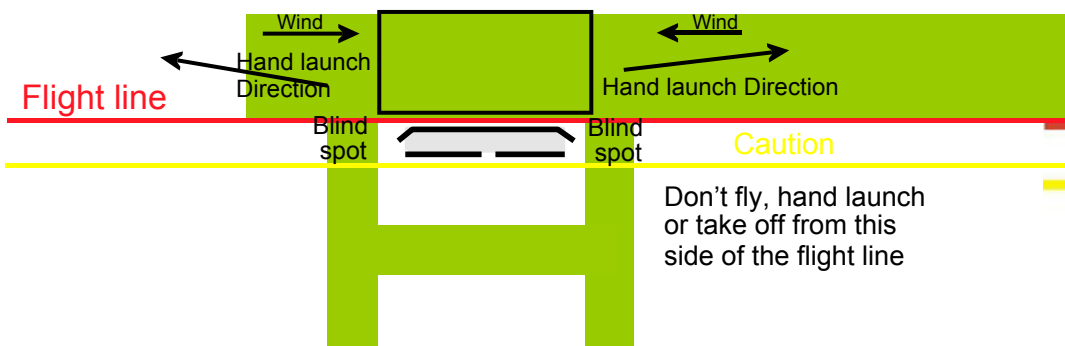
Care needs to be taken when launching that the flight ath doesn't transgress the **No flying zone**.

All Visitors are Welcome.

If you bring a friend or see an unaccompanied visitor ask them sign the sign-in book in the club house and offer them a coffee and a chair on the veranda and show them where they may go unaccompanied. Non MAAA visitors must remain behind the club fence(pink line) unless supervised by a BMAC member. Please don't allow non members to wander around by themselves. You must be an MAAA member to fly although you can "try out" if accompanied by an instructor.

No flying Zone

Don't fly power planes this side of flight line. Noise restriction apply as the crematorium is near by.



BMAC Procedure for Hand Launching

